

# What sets NETGEAR M4300 Switches apart?

**NETGEAR®**  
BUSINESS



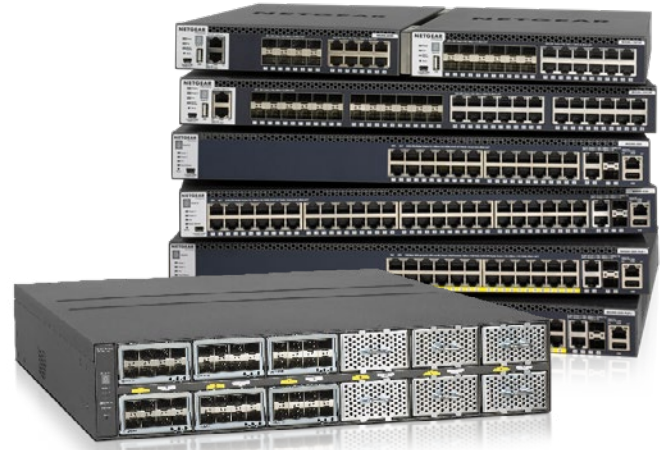
The M4300 switch series delivers L2/L3/L4 and IPv4/IPv6 world-class services for server and storage interconnect, professional audiovisual installations, mid-enterprise edge and SMB core with unrivalled ease of use.

Scaling from 24-port 1G full power PoE+ to 96-port 10G, the M4300 managed switch series is the world's first stackable platform offering edge to core stacking with unrivalled ease of use: 10 Gigabit models can seamlessly stack with 1 Gigabit models. Non-stop forwarding virtual chassis architecture provides advanced High Availability. Dual redundant, modular power supplies equipping full width models contribute to business continuity management for resilient networking. The M4300 is also the world's first stackable platform reproducing Spine and Leaf datacenter topologies in the same stack with unrivalled ease of use. No more bottlenecks or downtime!

The M4300 series also includes a unique switch model, composed of modules that allows your switch to grow with your business. The NETGEAR M4300-96X is a 2RU modular switch that comes either empty or pre-populated with 48 SFP+ ports and supporting up to 96-port 10GBASE-T copper (RJ-45) with first 48 ports capable of PoE+, 96-port 10GBASE-X fiber (SFP+), 24-port 40GBASE-X fiber (QSFP+), or a combination.

M4300 models are capable of PoE+ full provisioning, feature a Layer 3 feature set including static, policy-based and dynamic routing with RIP, VRRP, OSPF and PIM as standard, and are future-proof, SDN-ready. The M4300 is covered under NETGEAR ProSAFE industry-leading Lifetime Hardware Warranty with 90 days of Technical Support via phone and email, Lifetime Technical Support through online chat and Lifetime Next Business Day hardware replacement for utmost peace of mind.

## Discover the 10 reasons our customers love NETGEAR Fully Managed Switches



### 1. Most comprehensive portfolio

M4300 scales from 16-port 1G to 96-port 10G and provides a choice of copper, fiber and PoE. No additional module needed.

### 2. Scales with your business

Half-width M4300 models will let you pair a second switch in same U and M4300-96X allows to grow your connectivity by simply adding modules (10G or 40G, copper or fiber, with or without PoE+).

### 3. Affordable enterprise-grade switches

You will feel good about the price you have to pay for M4300s, with no hidden costs. Limited Lifetime warranty is included in the price. No license upgrades needed for 802.1x and MAB NAC implementation, Layer 3 (PBR, RIP, VRRP, OSPF and PIM)

### 4. Ideal for AV over IP and multicast

Already preconfigured out of the box with NETGEAR IGMP Plus™ for true AV and multicast Zero Touch network configuration.

### 5. Edge to core stacking

M4300 is the world's first stackable platform reproducing Spine and Leaf datacenter topologies in the SAME STACK with unrivalled ease of use. No more bottlenecks or downtime!

### 6. Full speed ahead

M4300 will scale up to very high performance needs with up to 128K MAC table, 2K ARP/NDP and 960Gbps of switching and routing capacity.

### 7. Absolutely NO downtime

Nonstop Forwarding (NSF) on the M4300 provides increased network service availability, eliminating downtimes, for a fully resilient network.

### 8. Convergent access layer

M4300 ring stacking reduces the number of logical units to manage with one easy web interface while bringing full network redundancy in aggregation to the core, and simplifies PoE deployment at the edge.

### 9. HA best practices

M4300 two-unit horizontal stacking is cost effective yet highly effective for HA with link aggregation (L2/L3/L4 LACP), load balancing and nonstop forwarding failover, for no single point of failure across your virtualized servers.

### 10. Full power redundancy

M4300 offers a cost effective, simplified, and hot-swappable Redundant Power Supply on full width models for mission critical applications.